



Thank you for choosing Bland for your cable and connectivity. We have been in network cabling systems for a decade now, and we are excited to introduce innovations in this catalog that will help you prepare for data demand in the years to come. Bland is dedicated to providing our customers with OEM/ODM solutions to fit their unique applications. We have not slowed down in these efforts over the past year. As always, our network experts are always ready to help if you need assistance, and we look forward to working with you in the future.

END-TO-END SOLUTIONS

Whether it's for a server room, conference room, operating room, or classroom, Bland has complete end-to-end cabling systems for your specific network application. With robust connectivity built in facilities, the selection of patch panels on the market, and cable for every type of network, our infrastructure systems give customers access to a broad set of solutions.





Category Jacks



Patch Panels



Patch Cords



Pre-terminated Trunks



Lan cables



Mounting box and Faceplates



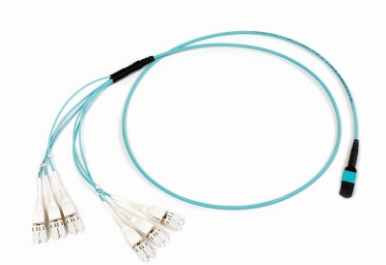
Patch Panels



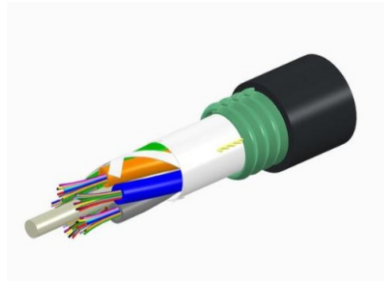
Fiber Panels and Enclosures



Adapter Plates and adapters



Fiber Trunks



Outdoor and indoor fiber cables



Fiber Patch cords and pigtails

Network Migration

Cat 6A is backwards compatible with Cat 6 and 5e, allowing it to support gigabit Ethernet and provide a seamless migration path to 10 gigabit bandwidth in the future (10GBASE-T). Using Cat 6A in new installations prevents the need to recable when upgrading to 10 Gb/s, avoiding possible network disruption and additional project costs in the future. End users and building owners who are planning for network upgrades or new construction in the near future should consider Cat 6A as a way to extend the expected life of their cabling systems. EN 50173 and ISO 11801 define 2.5GBASE-T and 5GBASE-T as class E_A applications so they require Class E_A channels using 6A components.

Twisted-Pair Migration Roadmap

	1G to 2.5G		2.5G to 5G	5G to 10G	10G to 25G or 40G	
	1G	2.5G	5G	10G	25G	40G
Category	5e / 6	5e / 6	5e / 6	6A	8	8
Max. Bandwidth	100 / 250MHz	100 / 250MHz	100 / 250MHz	500MHz	1250MHz	2000MHz
Max. Application Data Rate	1000BASE-T	2.5GBASE-T	5GBASE-T	10GBASE-T	25GBASE-T	40GBASE-T
Max. Reach	100m	100m	100m	100m	30m	30m
Cable Construction	Unshielded or Shielded	Unshielded or Shielded	Unshielded or Shielded	Unshielded or Shielded	Shielded	Shielded
Date Created	1999	2016	2016	2006	2016	2016

CATEGORY JACKS | CAT.6A FTP & UTP JACKS



CAT6A Shielded Jack



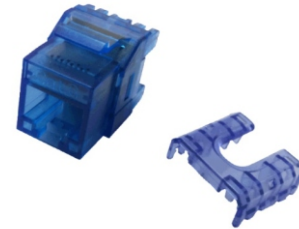
CAT6 Shielded Jack



10G Unshielded Jack



10G Unshielded Tool-Free Jack



CAT.6 LED unshielded Jack

10G CAT 6A SHIELDED TOOL-FREE SNAP-IN JACK

- High electrical performance with ample headroom in installed links
- Component performance certified by third-party testing labs
- Tool-free design requires no specialized termination tools
- 360° screen: rear contact features ensure contact to the cable shields and good EMI resistance
- Quick release function supports fast, safe, repeatable terminations

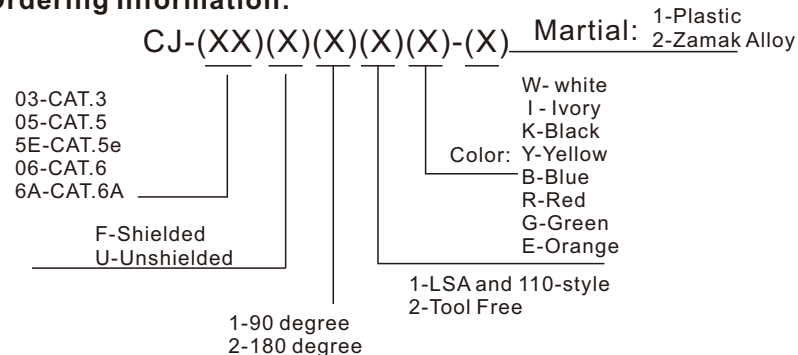
CAT 6 SHIELDED TOOL-FREE SNAP-IN JACK

- High electrical performance with ample headroom in installed links
- Tool-free design requires no specialized termination tool
- 360° screen: Rear contact features ensure contact to the cable shields and good EMI resistance
- Quick release function supports fast, safe, repeatable terminations

CAT 6 SNAP-IN JACKS

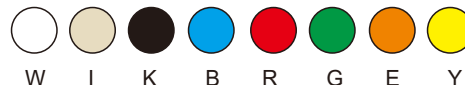
- LSA and 110-style options
- Shielded and unshielded options

Ordering Information:

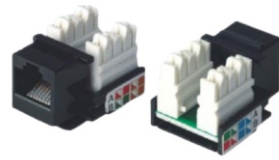


Part #	Description
CJ-06U12W-1	Cat 6 Unshielded Tool-free Snap-In Jack, 90degree, ivory white
CJ-06U22W-1	Cat 6 Unshielded Tool-free Snap-In Jack, 180degree, ivory white

CJ-06F12V-2	Cat 6A Shielded Tool-free Snap-In Jack, 180degree, ivory white
CJ-06F12V-2	Cat 6A Shielded Tool-free Snap-In Jack, 180degree, ivory white



CATEGORY JACKS | CAT.6 & CAT.5E JACKS



CAT 6 SHIELDED TOOL-FREE SNAP-IN JACK

- High electrical performance with ample headroom in installed links
- Tool-free design requires no specialized termination tool
- 360° screen: Rear contact features ensure contact to the cable shields and good EMI resistance
- Quick release function supports fast, safe, repeatable terminations

CAT 6 UNSHIELDED TOOL-FREE SNAP-IN JACK

- Rear, top, or side entry cable configuration for maximum flexibility
- Tool-free design requires no specialized termination tool

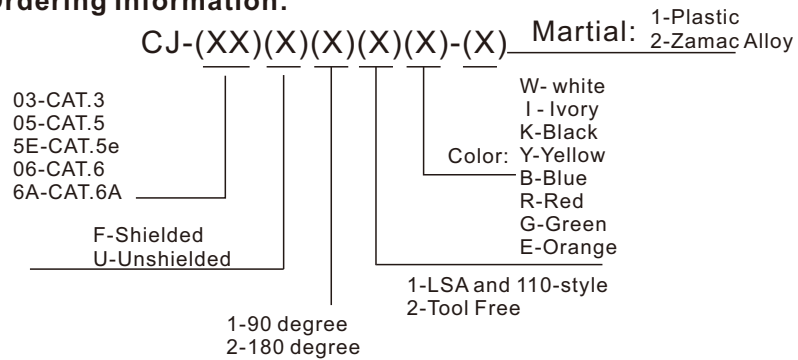
CAT 6 SNAP-IN JACKS

- LSA and 110-style options
- Shielded and unshielded options

CAT 5E TOOL-FREE SNAP-IN JACK

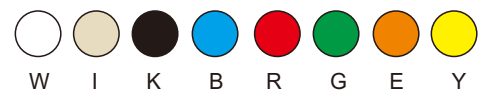
- Rear, top, or side entry cable configuration for maximum flexibility
- Tool-free design requires no specialized termination tool
- Shielded and unshielded options

Ordering Information:



Part #	Description
CJ-06U12W-1	Cat 6 Unshielded Tool-free Snap-In Jack, 90degree, ivory white
CJ-06U22W-1	Cat 6 Unshielded Tool-free Snap-In Jack, 180degree, ivory white

CJ-06F12V-2	Cat 6A Shielded Tool-free Snap-In Jack, 180degree, ivory white
CJ-06F12V-2	Cat 6A Shielded Tool-free Snap-In Jack, 180degree, ivory white



PATCH PANELS | Flat & Angled > Unshielded & Shielded



FLAT SHIELDED QUICK-PORT PATCH PANELS

- Shielding protects against electromagnetic interference (EMI) and radio frequency interference (RFI), and provides excellent alien crosstalk (AXT) suppression
- Includes appropriate earthing hardware
- Dispatchable front panels of 24 port for quickly insert modular jacks.

FLAT UNSHIELDED QUICK-PORT PATCH PANELS

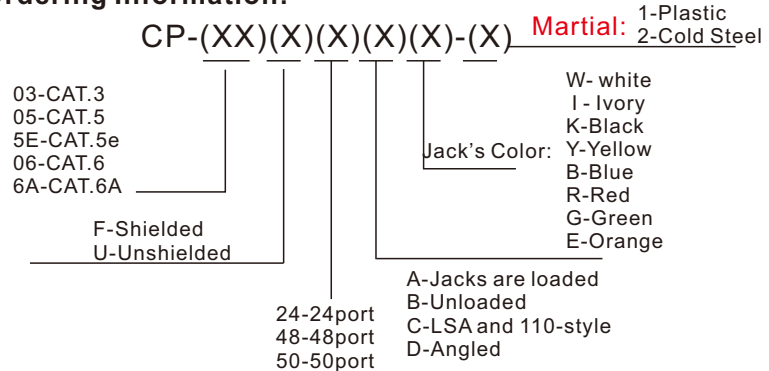
- Standard-density 24- and 48-port panels are available with white blocks or patented magnifying lens label holder
- Silk-screened port numbers on panel front

AVAILABLE CABLE MANAGEMENT:

See Section D for product details and ordering information.

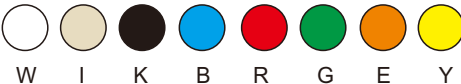
Rear Cable Management Bars can be folded and fastener clips of cable equiped

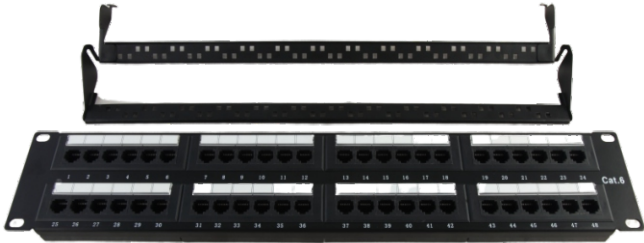
Ordering Information:



* Default Cat 6A/6/5e patch panels are kitted with black Jacks

Part #	Description
CJ-06F24AW-1	24port Cat 6 FTP patch panel, jack loaded white
CJ-06U48C0-2.....	48port Cat 6 UTP patch panel, jack loaded white





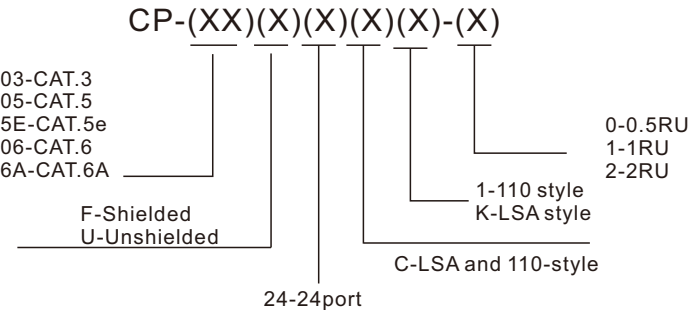
FLAT UNSHIELDED 110-STYLE PATCH PANELS

- 1RU 12- or 24-port, 2RU 48-port configurations
- 6-port RJ-45 modules on front, and 110-style punch downs on rear
- Includes color codes for T568A and T568B wiring schemes
- Includes 25-pair wiring schemes
- Silk-screened port numbers and paper label holders included
- Select panels include patented magnifying lens label holders for easy reading plugs, saves on costly repairs, and increases system longevity (select panels only)
- 1RU 24-port and 2RU 48-port panels include factory assembled earthing jumper
- Select panels include the Cable Management Clip for faster, easy cable singulation

AVAILABLE CABLE MANAGEMENT:

See Section D for product details and ordering information.
Rear Cable Management Bars can be folded and fastener clips of cable equipped

Ordering Information:



Part #	Description
CP-06U24C1-1	Cat6. 1RU 24-Port Flat 110-Style Patch Panel
CP-06U48C1-2.....	Cat6. 2RU 48-Port Flat 110-Style Patch Panel
CP-6AU24C1-0.....	Cat6A. 0.5RU 24-Port Flat 110-Style Patch Panel

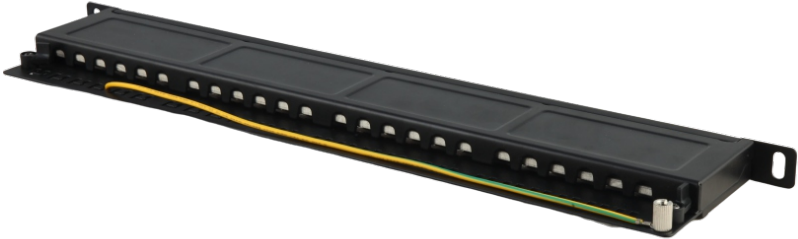
PATCH PANELS | Flat 10GPlus Cat 6A Patch Panels > Shielded & Unshielded



10GPLUS CAT 6A PATCH PANELS

- Component performance certified by third-party testing lab
- Accepts four shielded removable modular units, each comprising 6 ports
- Available in 1RU and 0.5RU
- Cable management/strain relief built into the panel rear
- Includes numerical port labeling and writable surface above each port
- Standard LSA IDC termination

Part #	Description
CP-6AF24CW-1	CAT.6A 1RU 24-Port 10G Shielded Patch Panel
CP-06U24CW-0.....	CAT.6 0.5RU 24-Port 10G Unshielded Patch Panel



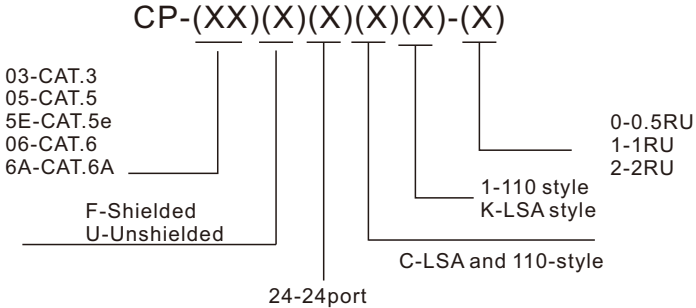
CAT 6 PATCH PANELS

- 1RU and 0.5RU 24-port panel in shielded and unshielded options
- LSA- and 110-style options
- Rear cable management for easy routing and strain relief
- Includes numerical port labeling and writable surface for each port

GIGAPLUS CAT 5E PATCH PANELS

- Universal IDC panel available in 1RU 24-port
- Panels available with built-in rear cable management strain relief
- Includes numerical port labeling and writable surface for each port
- LSA and 110 punchdown style options

Ordering Information:

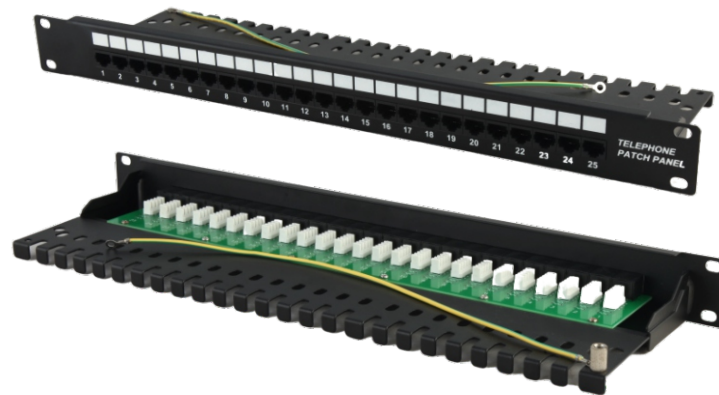


Part #	Description
CP-06U24CK-1	Cat.6 1RU 24-Port Flat LSA-Style Patch Panel
CP-06U48C1-2.....	Cat.6 2RU 48-Port Flat 110-Style Patch Panel
CP-5EU24C1-0.....	Cat.5e 0.5RU 24-Port Flat 110-Style Patch Panel



VOICE-GRADE 110-STYLE PATCH PANELS

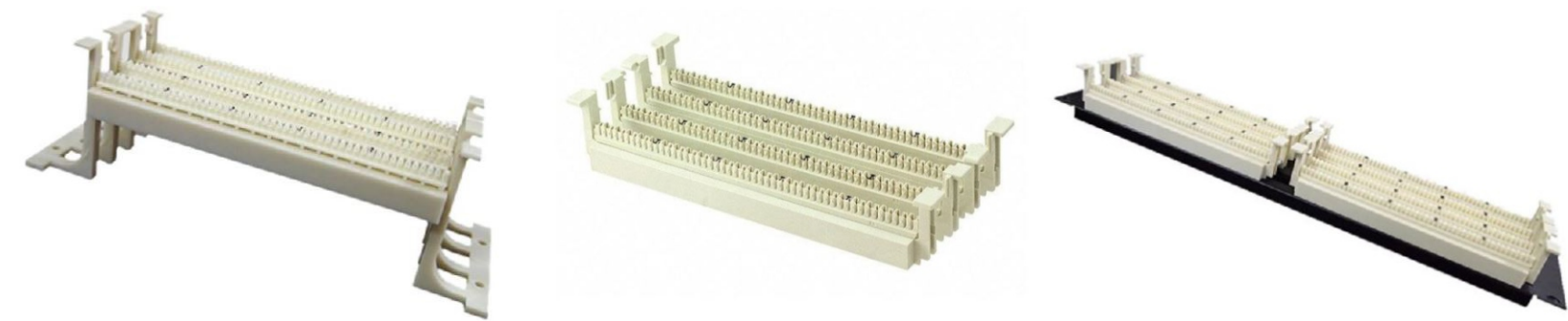
- 110-style or female 25-pair configurations
- Unique label delineates 1-, 2-, 4-, or 25-pair termination options
- 25th pair (violet/slate) is not used in 25-pair style panels
- 8P8C panel supports 10/100BASE-T applications
- Features 25-pair female jacks



VOICE-GRADE LSA-STYLE PATCH PANELS

- Compact 25- and 50-port panels, both in a 1RU footprint
- Suitable for a variety of Private Branch exchange (PBX) systems and direct-line connections

Part #	Description
CP-05U24C1-18P4C Patch Panel, 110 termination, 4-pin wiring
CP-05U48C1-28P4C Patch Panel, 110 termination, 4-pin wiring
CP-05U25CK-0Voice Panel 4-Pin Wiring, 1RU, unshielded, black, 25Port
CP-05U50CK-0Voice Panel 4-Pin Wiring, 1RU, unshielded, black, 50Port



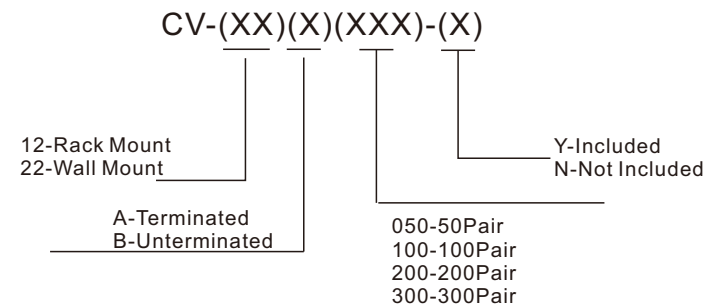
WALL-MOUNT WIRING BLOCK KITS

- Cat 6A 110-style 64-pair block supports high-frequency data signals up to 500 MHZ, and is designed to mitigate alien crosstalk (AXT)
- Cat 6 110-style wiring blocks available in 96-pair and 288-pair options
- Cat 5e 110-Style 100-pair blocks kitted with C-4 or C-5 clips

RACK-MOUNT WIRING BLOCK KITS

- Cat 6 110-Style 96-pair blocks kitted with C-4 clips
- Cat 5e 110-Style 100-pair blocks kitted with C-4 or C-5 clips

Ordering Information:



Part #	Description
CJ-05U24C1-1	8P4C Patch Panel, 110 termination, 4-pin wiring
CJ-05U48C1-2.....	8P4C Patch Panel, 110 termination, 4-pin wiring
CJ-05U25CK-0.....	Voice Panel 4-Pin Wiring, 1RU, unshielded, black, 25Port
CJ-05U50CK-0.....	Voice Panel 4-Pin Wiring, 1RU, unshielded, black, 50Port



CAT 6 S/FTP & U/UTP PATCH CORDS

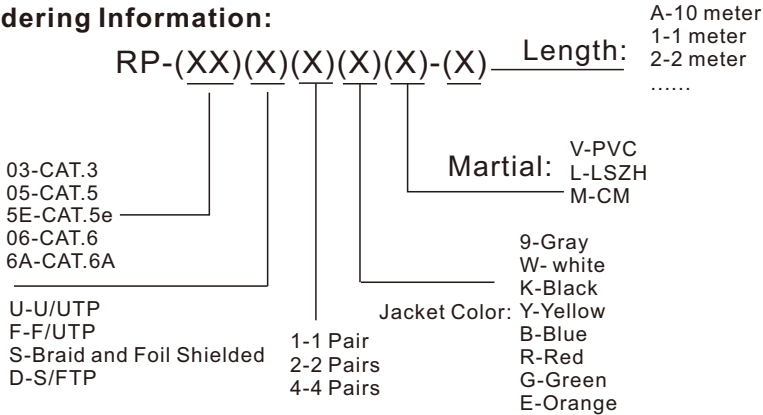
- Factory-made and tested patch cords offer guaranteed quality and performance
- Low profile boots for higher density connectivity
- LSHF/LSZH materials as standard

CAT 5E F/UTP & U/UTP PATCH CORDS

- Factory-made and tested patch cords offer guaranteed quality and performance
- Low-profile boots for higher density connectivity

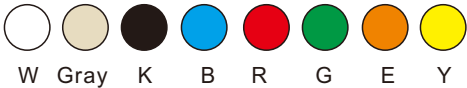


Ordering Information:



Part #	Description
RP-06U49V-2	Cat 6 UTP Patch cord, 4-pair, 2m, PVC, Gray

Non-standard color and length options are available to order on request.





PRE-TERMINATED COPPER TRUNKS

- Custom configured for length, jack type, and more
- Fast and easy installation with reduced labor costs
- 100% factory tested, with test results available
- Cat 6A trunks all use component-rated jacks, which provide guaranteed performance in short lengths
- Customized breakout length improves installation flexibility and appearance
- Optional pulling eye protects jacks and eases installation
- Pre-terminated assemblies are eligible for limited product, system, and performance warranties

PRE-TERMINATED COPPER CP CORDS

- Custom configured for length, jack type, and more
- Available with CAT.6A or CAT.6 jacks
- 100% factory tested, with test results available



Ordering Information:

RP-(XX)(X)(X)(X)(X)-(X) Length: A-10 meter
1-1 meter
2-2 meter
.....

03-CAT.3
05-CAT.5
5E-CAT.5e
06-CAT.6

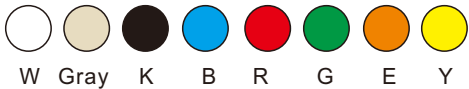
U-U/UTP
F-F/UTP
S-Braid and Foil Shielded
D-S/FTP

1-1 Pair
2-2 Pairs
4-4 Pairs

Martial: V-PVC
L-LSZH
M-CM

Jacket Color: 9-Gray
W- white
K-Black
B-Blue
R-Red
G-Green
E-Orange

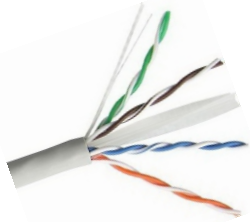
Part #	Description
RP-06U49V-2	Cat 6 UTP Patch cord, 4-pair, 2m, PVC, Gray





CAT 6A SHIELDED CABLES

- Mylar™ tape and aluminum shield provide a high level of security for sensitive networks
- Lower bit errors, resulting in increased network performance
- Independently tested and verified to meet ANSI/TIA Cat 6A and ISO 11801 Class EA performance
- Complies with ISO/IEC 11801, IEC 61156-5, EN 50173-1, EN 50288-10-1 and EN 50575:2014 (EuroClass)
- Supports Power over Ethernet (PoE) — see specification sheets for full PoE capabilities



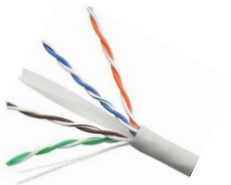
CAT 6A UNSHIELDED CABLES

- Independently tested and verified to meet ANSI/TIA Cat 6A and ISO 11801 Class EA performance
- Central Cross Filler for increased internal crosstalk suppression
- Complies with ISO/IEC 11801, IEC 61156-5, EN 50173-1, EN 50288-11-1 and EN 50575:2014 (EuroClass)
- Supports Power over Ethernet (PoE) — see specification sheets for full PoE capabilities



CAT 6 SHIELDED CABLES

- Mylar™ tape and aluminum shield provide a high level of security for sensitive networks
- Lower bit errors, resulting in increased network performance
- Independently tested and verified to meet ANSI/TIA Cat 6A and ISO 11801 Class EA performance
- Complies with ISO/IEC 11801, IEC 61156-5, EN 50173-1, EN 50288-10-1 and EN 50575:2014 (EuroClass)
- Supports Power over Ethernet (PoE) — see specification sheets for full PoE capabilities




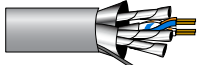

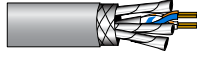
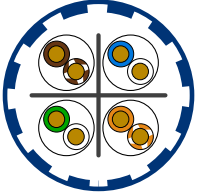
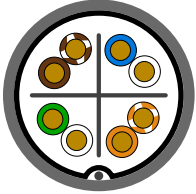
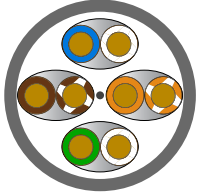
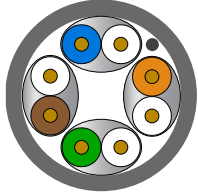
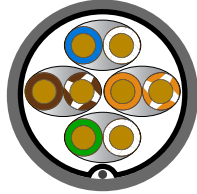
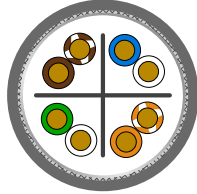
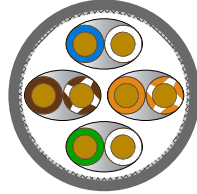


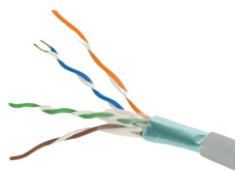
CAT 6 UNSHIELDED CABLES

- Meets ISO/IEC 11801 Class E standards
- Optimum support for Gigabit Ethernet
- Supports IEEE 802.3: 1000BASE-T (Gigabit Ethernet), 100BASE-T (fast Ethernet), and 10BASE-T applications
- Complies with ISO/IEC 11801, IEC 61156-5, EN 50173-1, EN 50288-6-1 and EN 50575:2014 (EuroClass)
- Includes non-metallic cross separator, allowing for stronger signal strength and less vulnerability to noise interference
- Supports Power over Ethernet (PoE) — see specification sheets for full PoE capabilities

Copper Cable Terms and Types

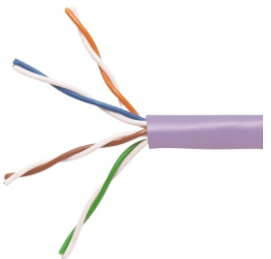


								
		U / UTP	F / UTP	U / FTP		F / FTP	SF / UTP	S / FTP
Physical Description	Cable	Unshielded	Foil shielded with drain wire	Unshielded	Unshielded zone cable	Foil shielded with drain wire	Foil and braid shielded	Braid shielded
	Pairs	Unshielded	Unshielded	Foil shielded	Foil shielded	Foil shielded	Unshielded	Foil shielded
Cross Section								
Typical Size		7.2 - 8.8 mm (0.283 - 0.346 in)	6.8 - 7.5 mm (0.268 - 0.30 in)	6.7 - 7.6 mm (0.264 - 0.299 in)	5.6 - 5.7 mm (0.220 - 0.224 in)	7.0 - 7.5 mm (0.276 - 0.295 in)	7.4 - 8.3 mm (0.29 - 0.325 in)	7.0 - 7.6 mm (0.276 - 0.299 in)



CAT.5E SHIELDED CABLES

- Mylar™ tape and aluminum shield reduces signal interference problems in areas of high EMI
- Supports 10BASE-T, 100BASE-T, and 1000BASE-T Ethernet
- Independently tested and verified to exceed IEEE 802.3 1000BASE-T, and ISO/IEC 11801 Class D standards
- Complies with ISO/IEC 11801, IEC 61156-5, EN 50173-1, EN 50288-2-1 and EN 50575:2014



CAT.5E UNSHIELDED CABLES

- Supports 10BASE-T, 100BASE-T, and 1000BASE-T Ethernet
- Independently tested and verified to exceed IEEE 802.3 1000BASE-T, and ISO/IEC 11801 Class D standards
- Complies with ISO/IEC 11801, IEC 61156-5, EN 50173-1, EN 50288-3-1 and EN 50575:2014 (EuroClass)
- Supports Power over Ethernet (PoE) — see specification sheets for full PoE capabilities

Ordering Information:

RC-(XX)(X)(X)(X)(X)-(X) **Length:**

1-305 meter
2-Special
.....

03-CAT.3
05-CAT.5
5E-CAT.5e
06-CAT.6
6A-CAT.6A

Martial:

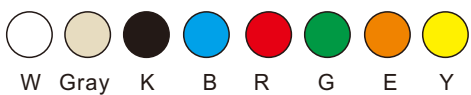
V-PVC
L-LSZH
M-CM
E-PE
R-CMR
P-CMP

U-U/UTP
F-F/UTP
S-Braid and Foil Shielded
D-S/FTP

1-1 Pair
2-2 Pairs
4-4 Pairs
T-25Pair
F-50Pair
H-100Pair

Jacket Color:

9-Gray
W- white
K-Black
Y-Yellow
B-Blue
R-Red
G-Green
E-Orange



HOUSINGS & FACEPLATES | Surface-Mount Boxes & Faceplates



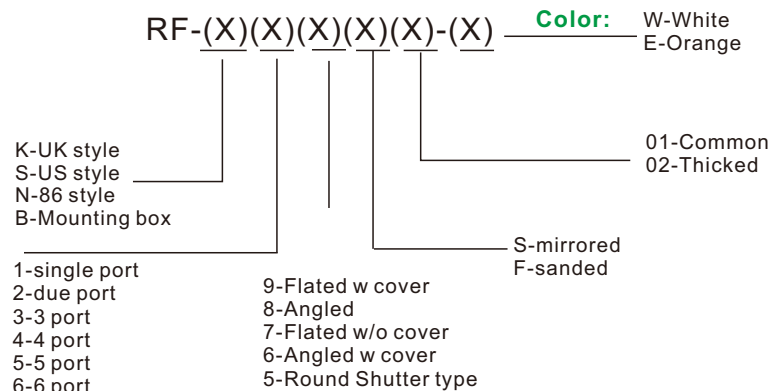
SURFACE-MOUNT BOXES

- Surface-mount boxes and back boxes have breakouts to match common raceway systems and cable entry
- One and two-port 41089 surface-mount boxes approved for use in air handling spaces [compliant with NEC 300-22 (b)©]
- Mounts with screws or adhesive mounting tape (both provided)
- 4S089 products are designed for use in air handling spaces and work with shielded or unshielded Cat 6A jacks to allow proper bend-radius control
- Multimedia Outlet System (MOS) Surface-Mount Boxes accept copper, and fiber modules

UK-STYLE FACEPLATES

- Outlet solutions for wall and trunking applications
- Used with select Snap-In Jacks and QuickPort jacks.
- UK-style faceplates come with M3.5 mounting screws and are available in both modular or shuttered versions
- Back boxes allow surface-mount applications

Ordering Information:



Part #	Description
CF-N29S02-W	86 x 86 mm 2- Port Shuttered Faceplate, white
CF-N29F02-W.....	86 x 86 mm 2- Port Angled Faceplate, white



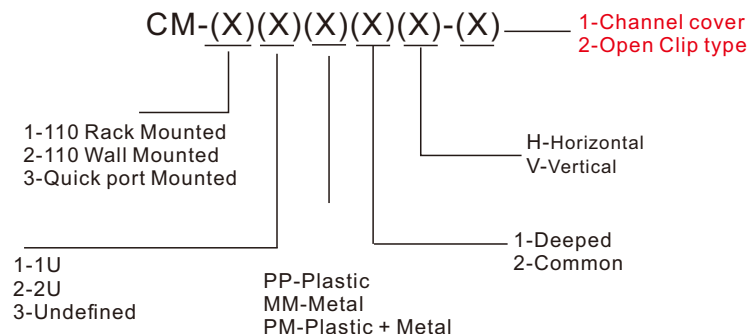
HORIZONTAL CABLE MANAGERS

- Available in 1RU, 2RU sizes
- All mount to standard 19-inch racks and cabinets
- Horizontal managers support transition to vertical management

Vertical 8" CHANNEL CABLE MANAGEMENT

- Ideal for today's large-scale deployments and Cat 6A installations with typical larger-diameter cable
- 80-inch channel ships in two 40-inch pieces for easier handling and installation
- Channels available with standard black cover
- Designer cover (gray) available as an accessory
- Channels include mounting bracket kit and two covers, one slack-loop organizer, and one cable retainer, per 80-inch side (front or front/rear)
- Covers feature integrated dual-hinge for easy accessibility
- Channels can be side- or center-mounted for better space utilization
- Large finger-passsthrough space aligns with rack units

Ordering Information:

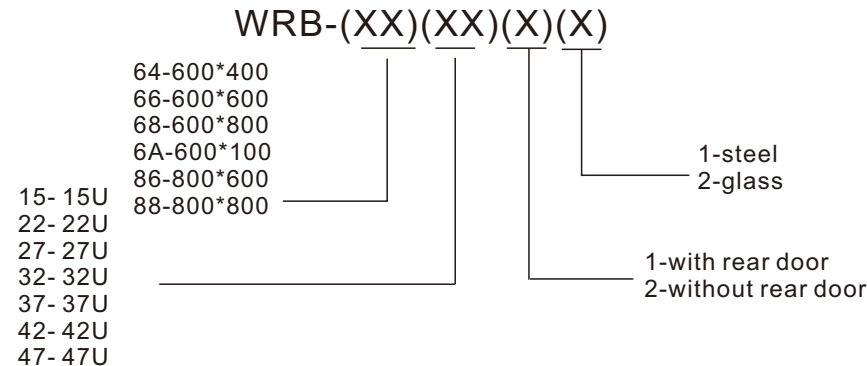




FIBER OPTIC DISTRIBUTION FRAME

- Integrated cable management and routing solutions for minimum bend radius, better slack storage, and protection
- Holds up to 22 patch and/or splice decks
- Lockable rear doors included to protect and conceal trunk cabling
- Optional front door kit (sold separately) with transparent door is lockable for additional security
- Occupies only one 2 x 2-foot tile
- Seismic rated to GR-63-CORE, Zone 4, UL 2046 Listed screws, and port ID label
- 1RU and 3RU flush-mount panels accept adapter plates and cassettes, and mount to 19-inch racks and cabinets

Ordering Information:





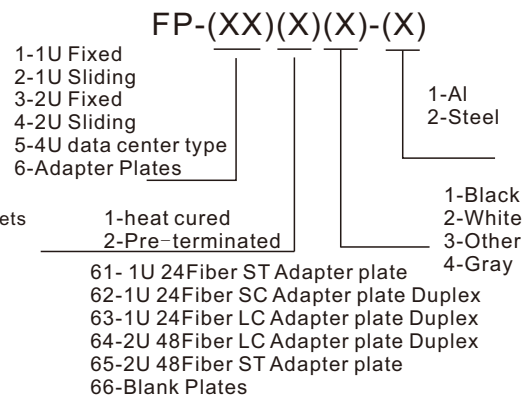
RACK MOUNT ENCLOSURES

- Accepts adapter plates, splice trays, and splice modules
- Flush-mount adapter bulkhead makes moves, adds, and changes easy
- One-piece removable cover allows for complete accessibility to the back of the enclosure
- Accepts injection-molded splice trays and 4-inch x 7-inch metal splice trays
- Enclosure can store up to 3 meters of 900 µm tight-buffered fiber per adapter
- Included accessory kit consists of cable ties, mounting ear screws, and port ID label
- 1RU and 3RU flush-mount panels accept adapter plates and cassettes, and mount to 19-inch racks and cabinets
- Optional add-on patch cord cable management tray (sold separately) uses existing rack unit

WALL-MOUNT ENCLOSURES

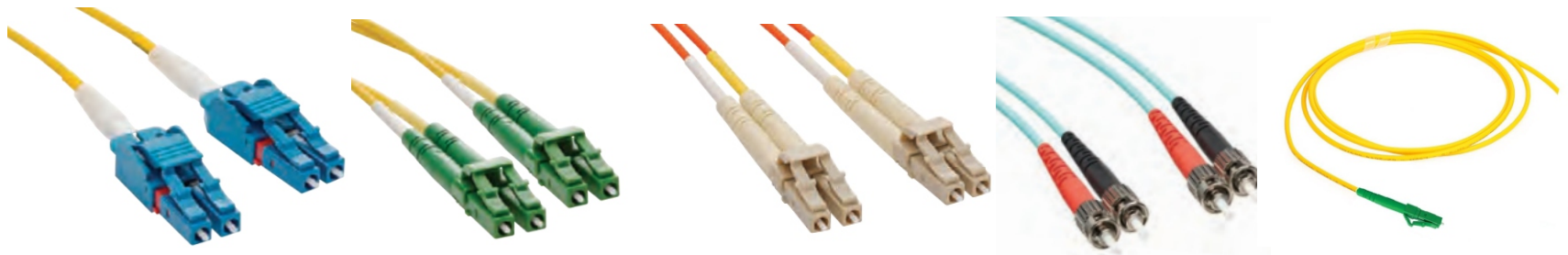
- Four sizes available to accommodate from 24 LC to 288 LC fibers
- Locking doors and dual-door access to separate user and service sides
- Cable and patch cord protection makes it easy for contractors to dress-out and protect cable and jackets from damage and pinching
- Field splicing options include both splice trays and self-contained splice modules
- Mini size mounting options: wall-mount, DIN rail, zero-RU, or cubicle wall installations
- Optional adapter bracket allows enclosures to accommodate

Ordering Information:



Part #	Description
FP21414-1.....2U Sliding Panel for heat cured adapter, Grey, Al	
FP31414-1.....2U Fixed Panel for heat cured adapter, Grey, Al	
FP62414-1.....1U 24Fiber SC Adapter plate Duplex, Grey, Al	
FP63414-1.....1U 24Fiber LC Adapter plate Duplex, Grey, Al	

PRE-TERMINATED CABLE ASSEMBLIES | Multi & Singlemode Patch Cords



MULTIMODE OPTICAL PATCH CORDS

- LC, SC, FC, and ST options available
- Low-Smoke Halogen-Free (LSHF/LSZH)
- 100% factory tested
- Individually packed and labeled
- **LC Uniboot features switchable boots for change in polarity**

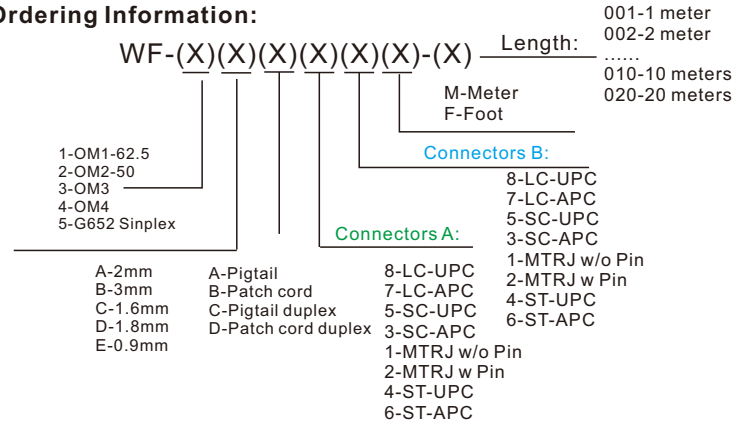
SINGLE-MODE OPTICAL PATCH CORDS

- LC, SC, and ST options available
- Low-Smoke Halogen-Free (LSHF/LSZH)
- 100% factory tested
- Individually packed and labeled
- **LC Uniboot features switchable boots for change in polarity**

SINGLE-MODE AND MULTIMODE OPTICAL PIGTAILS

- OM1, OM2, OM3, OM4, and single-mode
- LC, SC, and ST options available
- UPC or APC polish options
- Low-Smoke Halogen-Free (LSHF/LSZH)
- 900 µm tight-buffered cores

Ordering Information:



Part #	Description
WF5A2D88M002	LC 2.0mm, 9/125um, simplex Patch cord, 2m
WF1A2D55M002	SC 2.0mm, 62.5/125um, duplex Patch cord, 2m
WF2A2D55M002	SC 2.0mm, 50/125um, duplex Patch cord, 2m
WF3A2D55M002	SC 2.0mm, 10Gigabit, duplex Patch cord, 2m
WF5E1A40M001	ST 0.9mm, 9/125um, simplex pigtail, 1m
WF2E1A50M001	SC 0.9mm, 50/125um, simplex pigtail, 1m

PRE-TERMINATED CABLE ASSEMBLIES | Pre-Terminated Trunk Cables & Harnesses



PRE-TERMINATED TRUNK CABLES

- Up to 70% faster install than field-terminated trunks
- Discrete connectors are heat cured and use ceramic ferrules and sleeves for optimal performance
- Optional pulling eye protects connectors and eases installation
- Available in LC, SC, and MTP
- MTP polarity options are TIA methods A, B, or C
- 100% factory tested, with test results included for each assembly
- All assemblies labeled with serial number and length for traceability and easy reorder

HARNESSES

- Pre-terminated MTP-to-discrete connectors (LC, SC, ST) in all fiber types
- Custom short-length cable reduces congestion in cabinet or rack patching applications
- Custom staggering available
- Straight polarity configuration
- 100% factory tested, with test results included for each assembly
- All assemblies labeled with serial number and length for traceability and easy re-order



Trunk Ordering Information:

WF-(X)(X)(X)(X)(X)(X)-(XXX)

FIBER COUNT:

- 1-OS2
- 2-OM3
- 3-OM4

Method A

- 24 F MTP (male)
- 24 F MTP (female)
- 12 F MTP (male)
- 12 F MTP (female)
- 8 F MTP (male)
- 8 F MTP (female)
- SC Duplex APC
- LC Duplex APC
- LC Duplex
- SC Duplex
- LC Uniboot APC
- LC Uniboot

Method B

- 24 F MTP (male)
- 24 F MTP (female)
- 12 F MTP (male)
- 12 F MTP (female)
- 8 F MTP (male)
- 8 F MTP (female)
- SC Duplex APC
- LC Duplex APC
- LC Duplex
- SC Duplex
- LC Uniboot APC
- LC Uniboot

Method C

- 24 F MTP (male)
- 24 F MTP (female)
- 12 F MTP (male)
- 12 F MTP (female)
- 8 F MTP (male)
- 8 F MTP (female)
- SC Duplex APC
- LC Duplex APC
- LC Duplex
- SC Duplex
- LC Uniboot APC
- LC Uniboot

Connectors A:

- 24 F MTP (male)
- 24 F MTP (female)
- 12 F MTP (male)
- 12 F MTP (female)
- 8 F MTP (male)
- 8 F MTP (female)
- SC Duplex APC
- LC Duplex APC
- LC Duplex
- SC Duplex
- LC Uniboot APC
- LC Uniboot

Connectors B:

- 24 F MTP (male)
- 24 F MTP (female)
- 12 F MTP (male)
- 12 F MTP (female)
- 8 F MTP (male)
- 8 F MTP (female)
- SC Duplex APC
- LC Duplex APC
- LC Duplex
- SC Duplex
- LC Uniboot APC
- LC Uniboot

Breakout Length:

- 0.5m
- 0.9m
- 1.0m
- 1.5m

Length:

- Min = 3 m
- Max = 550 m

Harnesses Ordering Information:

WF-(X)(X)(X)(X)(X)(X)-(XXX)

FIBER COUNT:

- 1-OS2
- 2-OM3
- 3-OM4

Method A

- 8 F MTP (female)
- 8 F MTP (male)
- 12 F MTP (female)
- 12 F MTP (male)
- 24 F MTP (female)
- 24 F MTP (male)

Method B

- 8 F MTP (female)
- 8 F MTP (male)
- 12 F MTP (female)
- 12 F MTP (male)
- 24 F MTP (female)
- 24 F MTP (male)

Method C

- 8 F MTP (female)
- 8 F MTP (male)
- 12 F MTP (female)
- 12 F MTP (male)
- 24 F MTP (female)
- 24 F MTP (male)

Connectors A:

- LC Duplex
- SC Duplex
- LC Uniboot
- SC Duplex APC
- LC Duplex APC
- LC Uniboot APC
- 8 F MTP (female)
- 8 F MTP (male)

Connectors B:

- LC Duplex
- SC Duplex
- LC Uniboot
- SC Duplex APC
- LC Duplex APC
- LC Uniboot APC
- 8 F MTP (female)
- 8 F MTP (male)

Breakout Length:

- 0.5m
- 0.9m
- 1.0m
- 1.5m

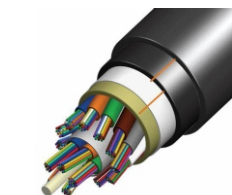
Length:

- Min = 2 m
- Max = 15 m



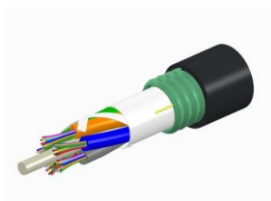
CENTRAL DRY TUBE CABLE

- Gel-free central dry tube construction for reduced termination time
- 4, 8, and 12 fiber option constructed around a 3.00 mm dry loose-tube
- 24 fiber option constructed around a 3.50 mm dry loose tube
- Cable color is black



MULTI-LOOSE-TUBE CABLE (12-216 FIBERS)

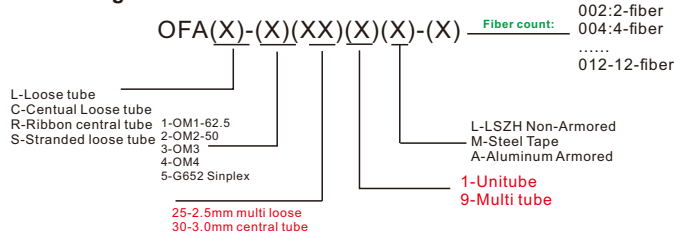
- For building and campus backbone applications where higher-fiber counts are required
- Up to 5~18 x 2.5 mm diameter loose tubes with up to 12 fibers and solid fillers
- Stranded around a rigid glass non-metallic central-strength member
- Layer of water-blocking tape provides interstitial water blocking
- Cable color is black



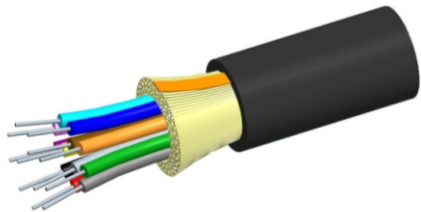
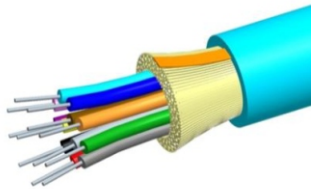
Steel-Tape or Aluminum ARMoured MULTI-LOOSE-TUBE CABLE

- For applications requiring a higher-tensile load than unitube constructions
- Compact low-fiber-count options
- Up to 6 x 2.1 mm diameter loose tubes containing up to 4 fibers and solid fillers where required
- Stranded around a rigid glass non-metallic central-strength member
- Layer of water-blocking tape provides interstitial water blocking, and layer of corrugated steel-tape armour provides additional crush resistance

Ordering Information:



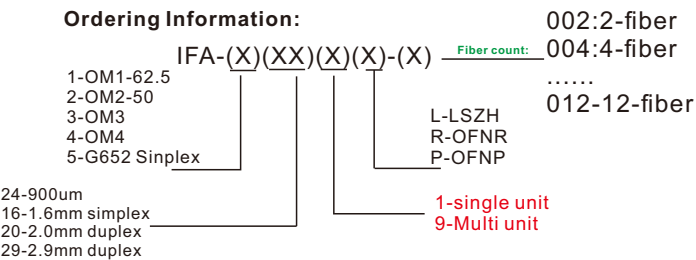
Part #	Description
OFAL5251L-008	8-fiber, Simplex, 9/125um, non armoured unitube cable
OFAL1251L-012	12-fiber, Multi mode, 62.5/125um, non armoured unitube cable



TIGHT-BUFFERED PREMISE DISTRIBUTION CABLES

- Ideal for LAN backbone and premises wiring
- Tight-buffered 900 µm construction
- Offered in OM1, OM2, OM3, OM4, and single-mode
- Available in fiber counts of 2, 4, 6, 8, 12, 16, and 24
- Cable color is black

Part #	Description
IFA5241R-008	8-fiber, Simplex, 900um, 9/125um, Distribution Cable OFNR
IFA2241R-008	8-fiber, Duplex, 50/125um, Distribution Cable OFNR
IFA3241R-008.....	8-fiber, Duplex, 900um, 10Gigabits, Distribution Cable OFNR, 300m
IFA4241R-008.....	8-fiber, Duplex, 900um, 10Gigabits, Distribution Cable OFNR, 550m
IFA5241L-008	8-fiber, Simplex, 900um, 9/125um, Distribution Cable LSZH
IFA2241L-008	8-fiber, Duplex, 50/125um, Distribution Cable LSZH
.....	

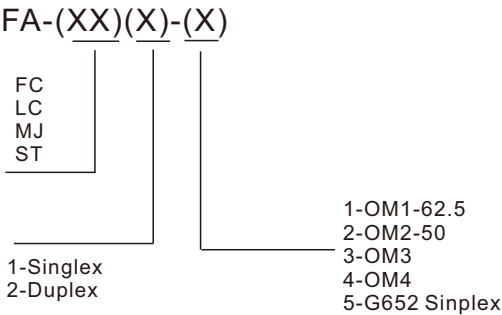




OPTICAL ADAPTERS

- LC adapters (duplex and quad) have a polymer body with a precision alignment sleeve
- SC adapters (simplex and duplex) have a polymer body and precision alignment sleeve
- ST adapters have a nickel-plated zinc-die-cast body with precision alignment sleeve

Ordering Information:

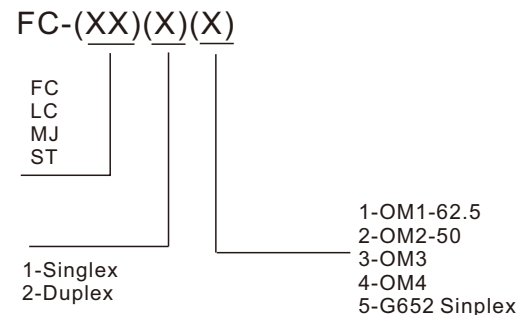


Part #	Description
FA-LC1-5	LC Simplex, OS2 single-mode
FA-LC2-2	LC OM2 Multi-mode
FA-SC2-2	SC OM2 Multi-mode
FA-ST2-2	ST OM2 Multi-mode



- Pre-polished, field-installable connectors
- Use precision zirconia ferrules
- Require no polishing or epoxy curing; provide immediate termination
- Precision mechanical termination uses molded v-groove technology to retain and align the fiber
- Terminated on 250 μ m or 900 μ m buffered fiber and/or 2 or 3 mm jacketed fiber
- Higher yields with Visual Fault Locator (VFL)-compatible LC, SC, and ST connectors
- Available in OM1, OM2, OM3, OM4, OS2 UPC, and OS2 APC (SC only)

Ordering Information:



Part #	Description
FC-LC15	LC Sinplex, OS2 single-mode
FC-LC22	LC OM2 Multi-mode
FC-SC22	SC OM2 Multi-mode
FC-ST22	ST OM2 Multi-mode



FIBER OPTIC QUICKCON TOOL KIT

- Precision cleaving for guaranteed QuickCON connector performance
- Terminates both multimode and single-mode fiber

Ordering Information:

WRT- (X)(X)

F-Fiber Optic
C-Copper

- 1-Optical Tool Kit
- 2-Optical Consumables
- 3-110 punch tool
- 4-5-pair punch tool
- 5-180 degree punch tool
- 6-Strip Tool for copper cable

Part #	Description
WRT-F1.....	Optical Tool Kit
WRT-F2.....	Optical Optical Consumables
WRT-C3.....	110 punch tool
WRT-C4.....	5-pair punch tool